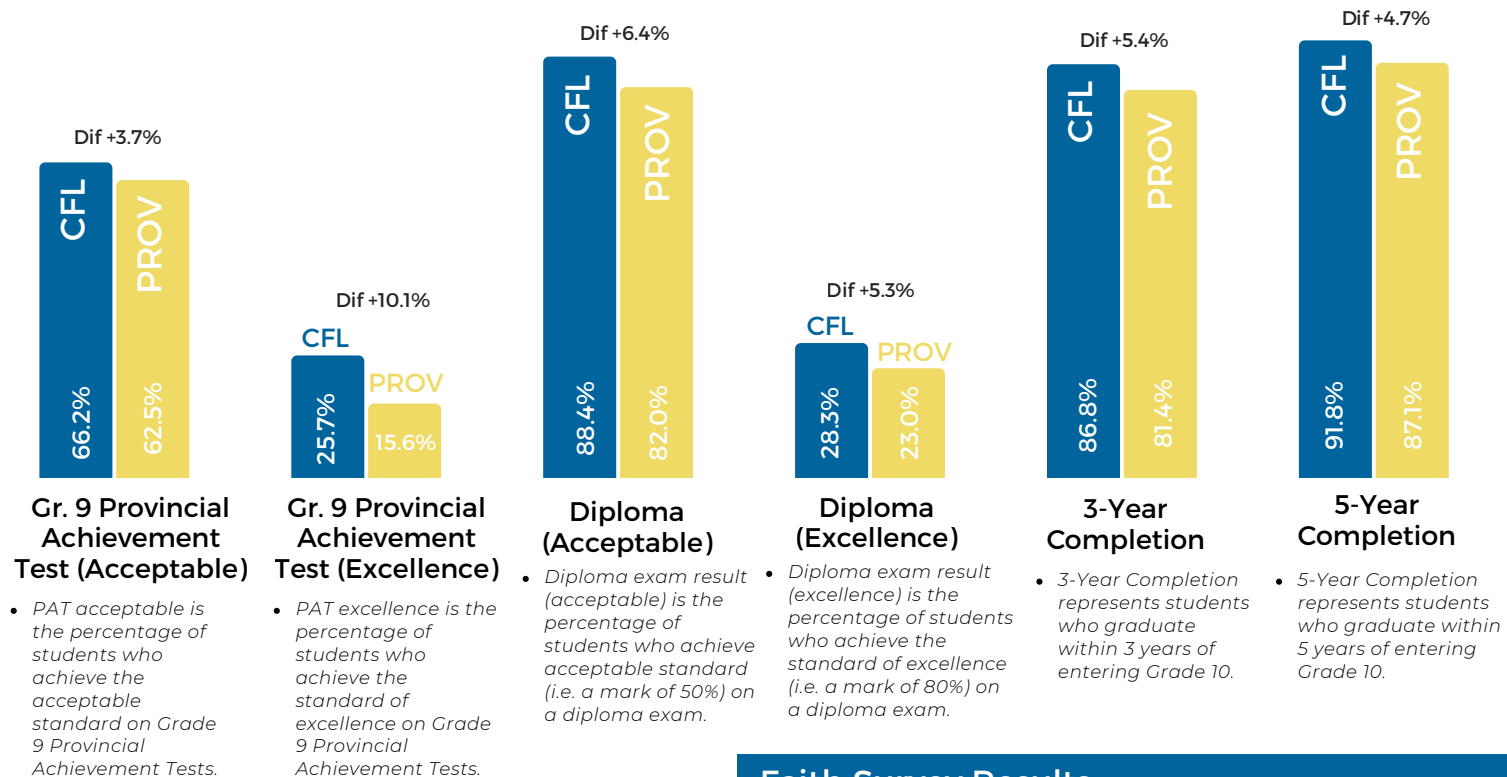
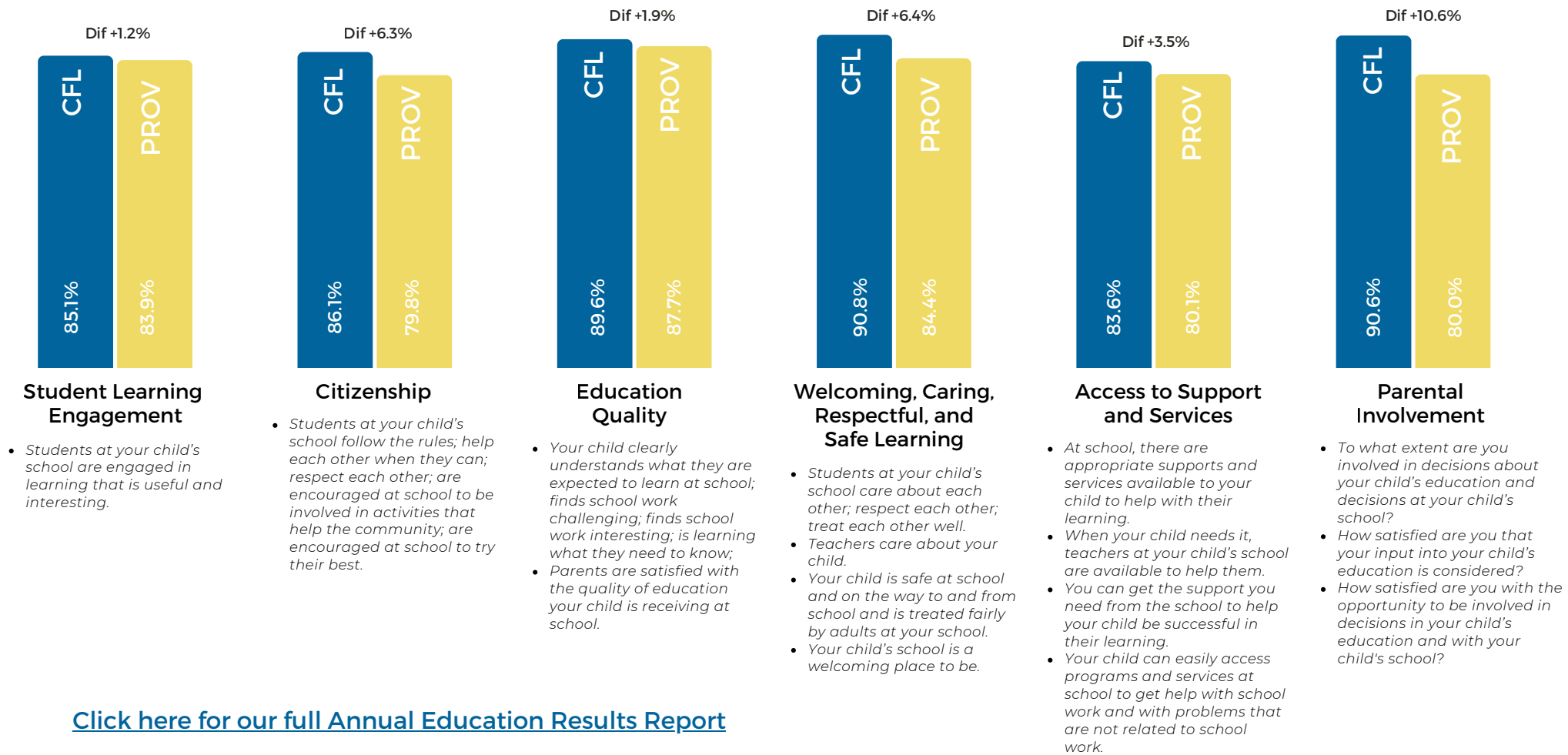


## ALBERTA ASSURANCE ANNUAL EDUCATION RESULTS

Alberta Education Assurance is a set of 12 performance measures calculated by Alberta Education for schools and school boards across the province. Schools and school boards are evaluated based on achievement, improvement, and overall performance.



### Faith Survey Results

- 73%** Percentage of students, parents, and teachers who indicate that they are satisfied with the relationship that exists between the school and the local Catholic parish.
- 74%** Percentage of students, parents and teachers who are satisfied with the religious celebrations that are celebrated with the school.
- 73%** Percentage of students, parents and teachers who are satisfied with what is being taught in religious education classes.
- 70%** Percentage of students, parents and teachers who indicate they are satisfied with the level of Catholic faith formation of students at the school.
- 80%** Percentage of students, parents and teachers who indicate they are satisfied with the efforts to live our Catholic Social Teaching at school.

#### Insight:

The Centre for Learning@HOME demonstrates a strong commitment to its faith, evidenced by staff's pastoral and Christ-like approach to education. The school is currently enhancing spiritual growth by increasing student participation in liturgies, prayer services, and celebrating Catholic Social Teachings.

### Insights

- Educational quality at The Centre for Learning@HOME remains very strong, evidenced by consistently high satisfaction levels from both parents and students across all areas.
- The learning environment is consistently reported as welcoming, caring, respectful, and safe by students, parents, and staff, a positive atmosphere fostered primarily by parents with school support.
- Parents are recognized as key partners in their children's education, actively participating in learning decisions and having a meaningful voice in school matters through the established School Council.
- The Centre for Learning@HOME continues to demonstrate strong academic results on both Provincial Achievement Tests and Diploma examinations, supported by the Digital Assessment Platform which contributes to increased student participation.
- As a school of choice, The Centre for Learning@HOME is committed to supporting students in achieving their high school diploma at a flexible pace (three, four, or five years) that meets their individual learning needs.